

TSH

SOCO
INNOVATION

BE FUN
BE TREND



DYNAMIC LED HEADLIGHT

Radiation distance

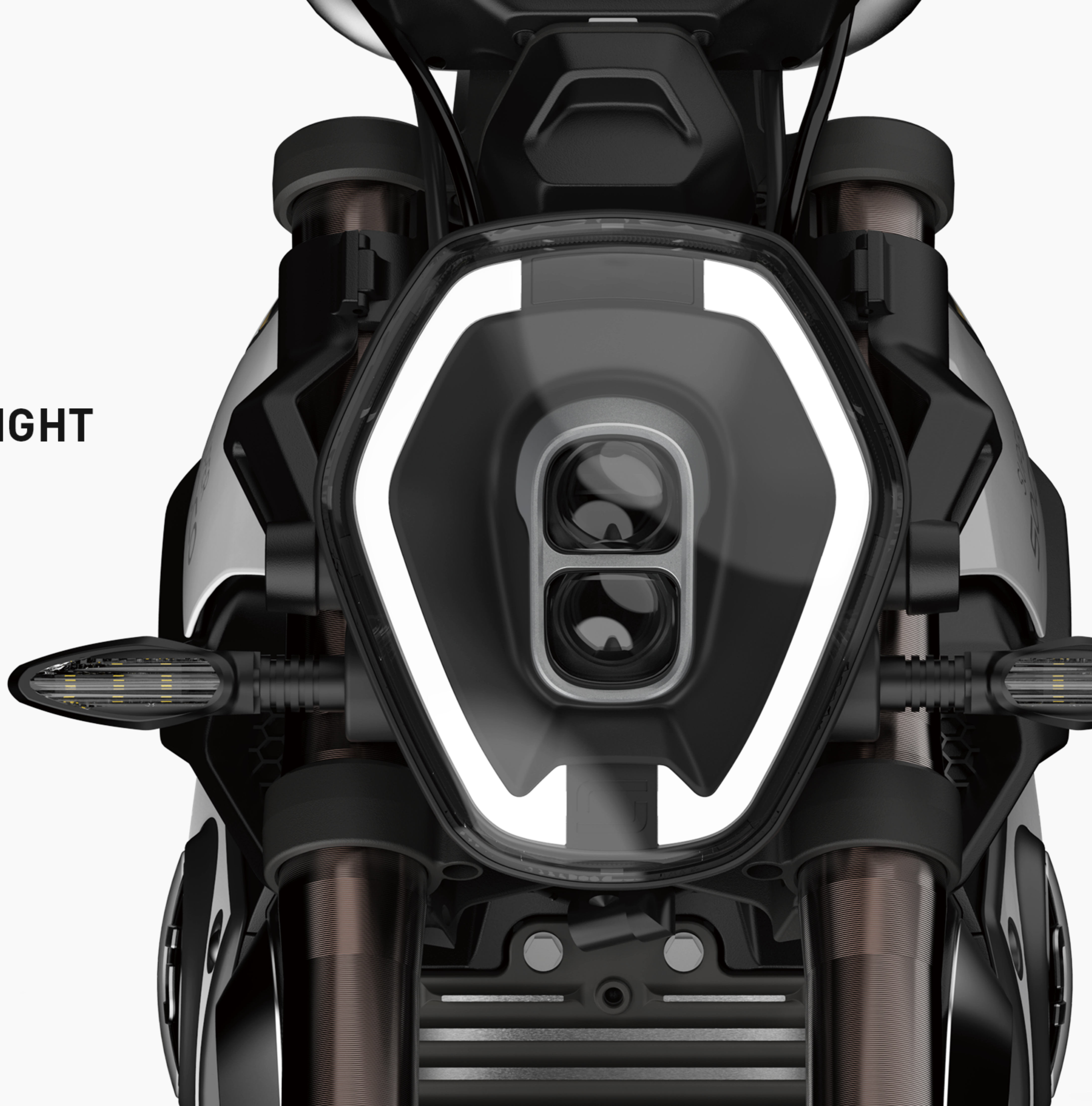
45_m

High beam brightness

20000_{cd}

Low beam brightness

4000_{cd}



High beam



Day light



Low beam

BOSCH 17-INCH HIGH-PERFORMANCE MOTOR

17-Inch large wheel high performance motor – joint developed with BOSCH. Strong output, quick acceleration. Adopts C35 magnet specifications; Large climbing angle supported by strong torque; Energy-saving features with high efficiency.

55N.m Motor torque	2100w Max. power	89% Conversion efficiency	560rpm Rated RPM
------------------------------	----------------------------	-------------------------------------	----------------------------



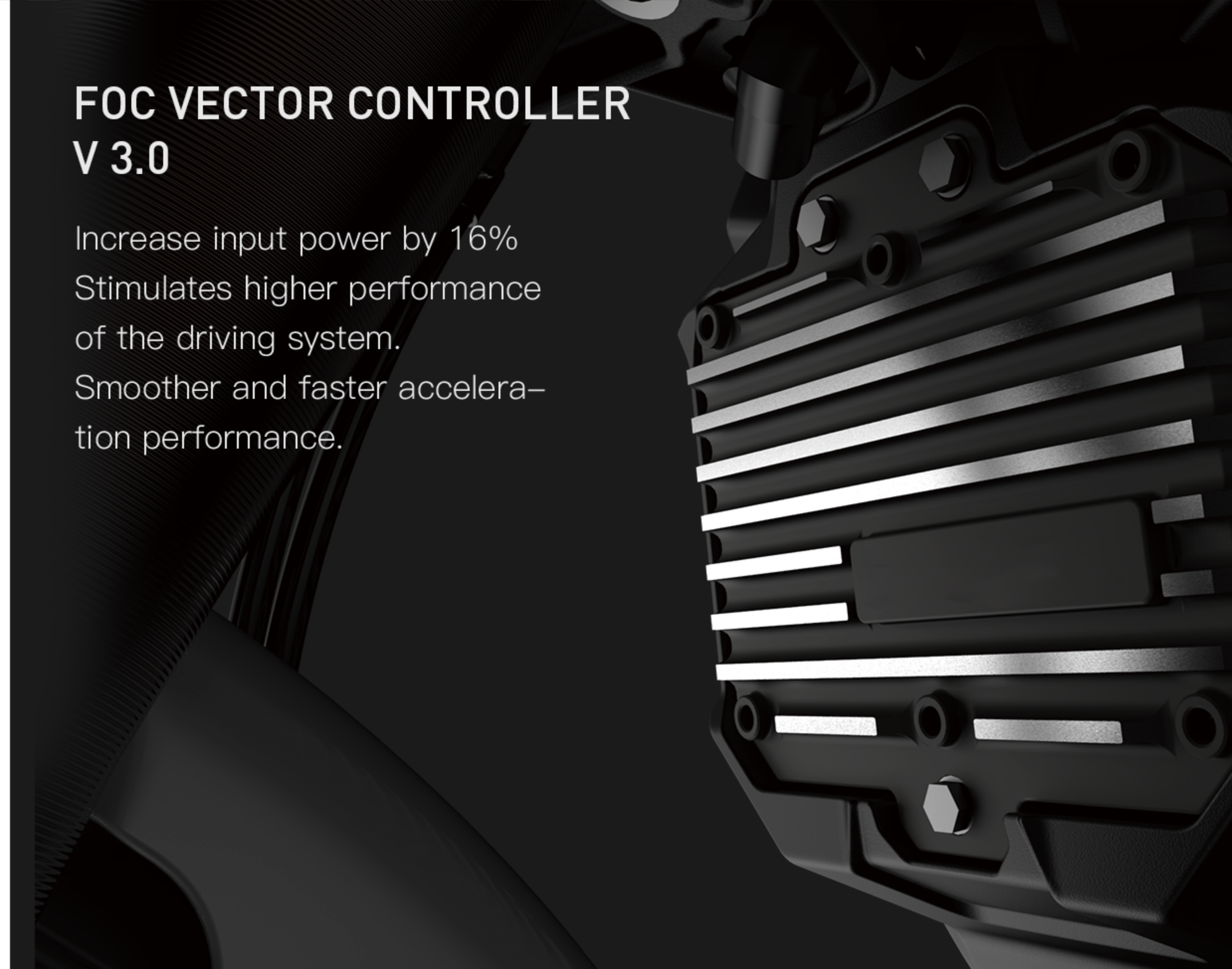
INTEGRATED WRAPAROUND LED TAILLIGHT

Visual Range, More Than 270 °,
Make Night Driving Safer.



FOC VECTOR CONTROLLER V 3.0

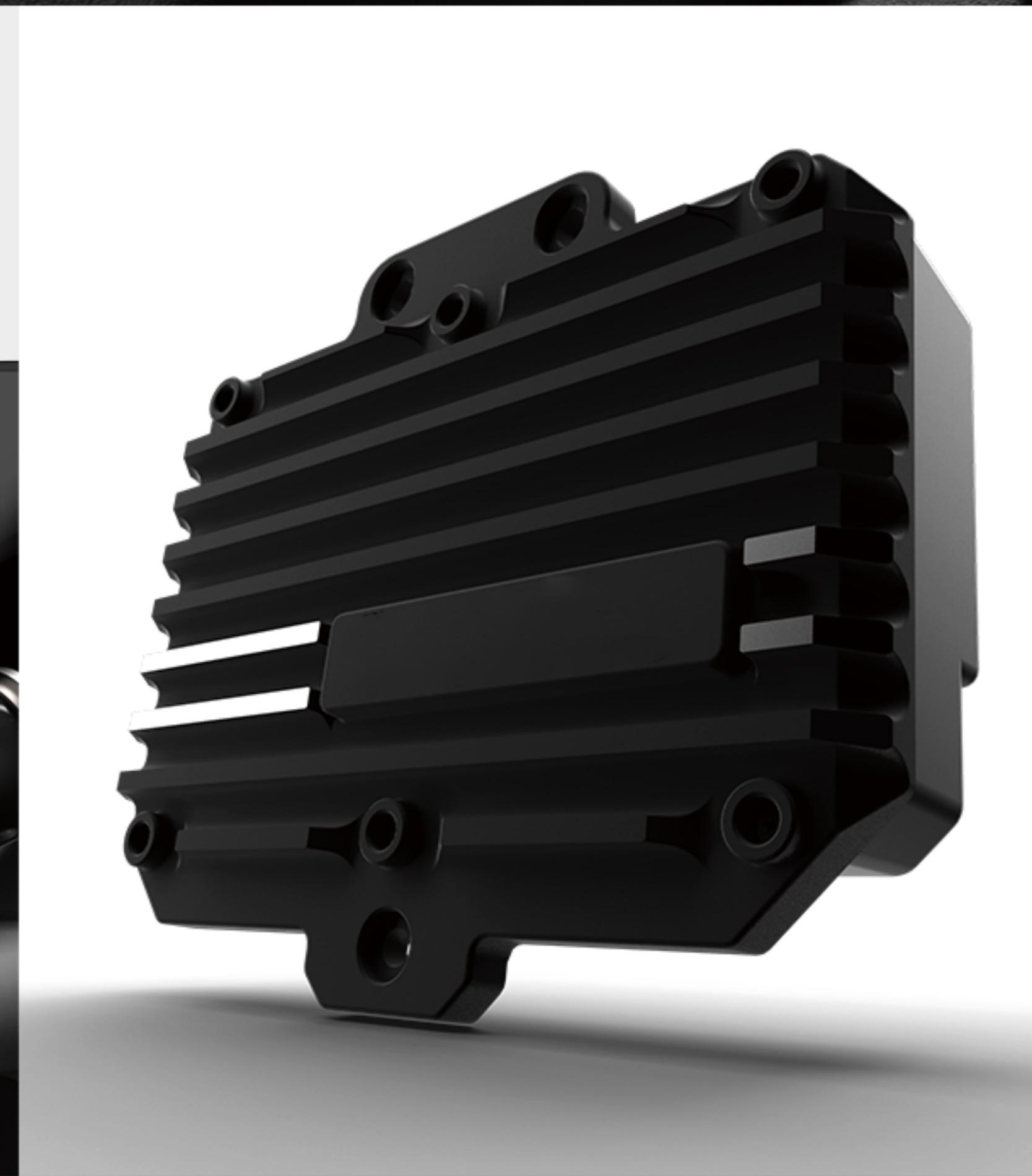
Increase input power by 16%
Stimulates higher performance
of the driving system.
Smoother and faster accelera-
tion performance.



COATING PROCESS

Double curing process, significantly improve the adhesion.
Keep CBS gloss, color fullness and bright.

SOCO
INNOVATION



FRONT SUSPENSION

Racing Motorcycle Type Of 35mm Inverted Hydraulic Shock Absorbers. With A Stronger Torsion Resistance, More Flexible And Easier To Control.



ADJUSTABLE CENTRALIZED REAR SUSPENSION

Compared With Traditional Bilateral Suspension, Adjustable Racing Motorcycle Type Of Central Shock Absorber Keep The Gravity In Middle Of The Vehicle. When Turning Around, More Flexible And Feel Balanced. Ensure The Sporty Performance.



RACING MOTORCYCLE TYPE OF SPLIT FRAME

High Power Motorcycle Using Separated Low Carbon Frame, Lighter, Stronger, More Durable.



100KM AUTONOMY

UN38.3 certified. Adopts high-capacity 18650 cells.

100km autonomy tested with 2 battery packs @ average speed 45km/h with 75kg rider, city road.

Capacity

60.30 Ah

Weight

10 kg

Lifetime

3 years+

Charging Cycles

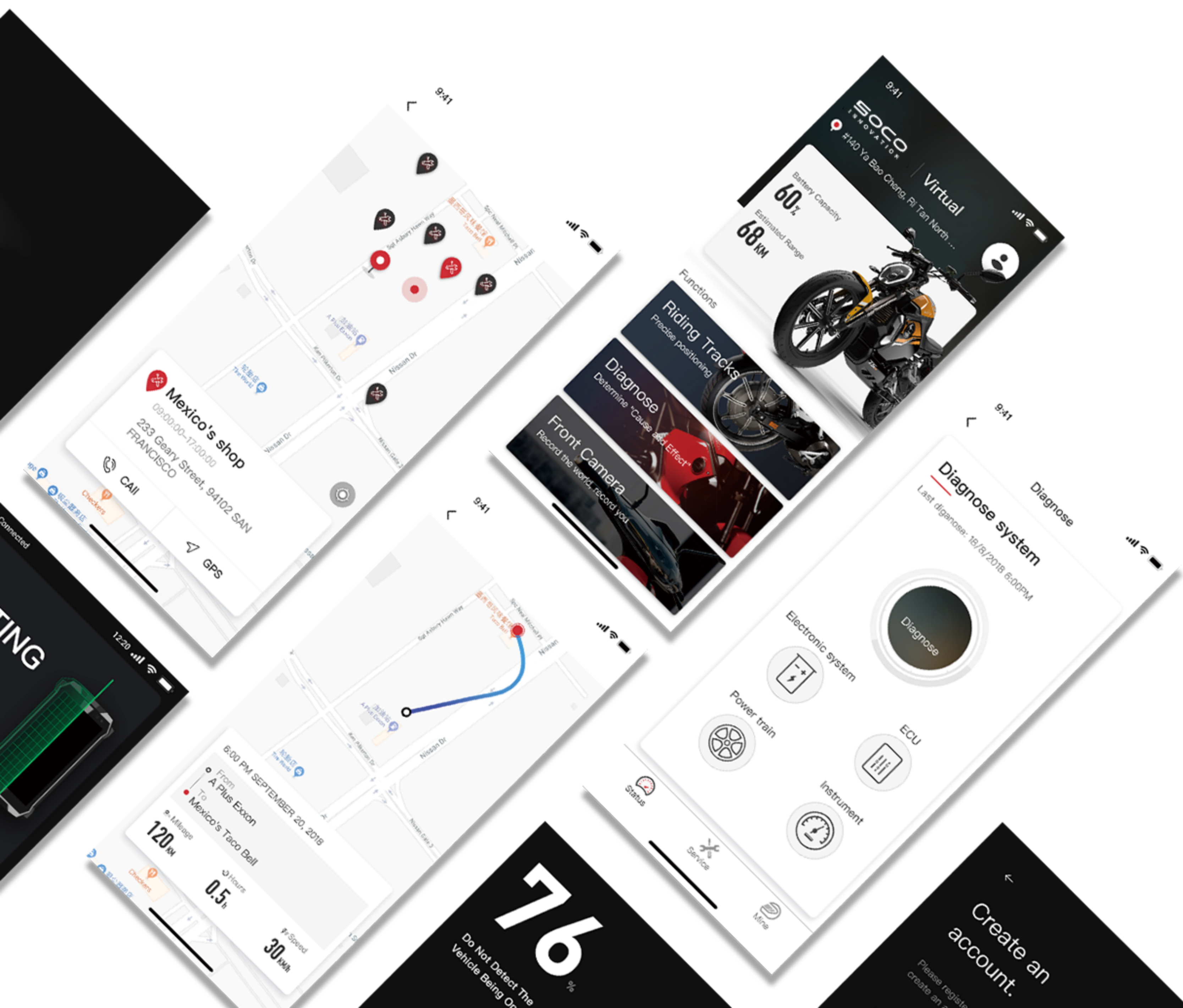
800 times+

Charging Time

≈ 8 h

Cell Type

18650



BMOS V3.3 CENTRAL CONTROL SYSTEM

Self-developed by Super Soco, BMOS V3.3 is a perfect combination with Super Soco APP, connecting you, your vehicle and cloud, Intelligent and practical.

Super Soco App is available subject to countries.



Vehicle
Inspection



Location



Anti-theft
system



Record



Warning



Navigation

TSX Parameters

Model	TSX	Motor torque	55 N·m
Color		Climbing angle	17°
L*W*H	1895*703*1066mm	Net Weight	79KG
Range with one battery pack	60KM@ 45KM/H Average Speed with 75kg driver	Instrument	LCD instrument
Voltage	60V	30 Minutes power	1900W at 330 min-1
Capacity	30Ah	Max power	2100W
Motor	BOSCH	Keyless Go	Available

* The data come from the corporate laboratory tests in ideal conditions and all data are for reference only.

